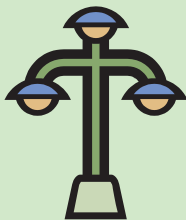


## Outdoor Lighting



If you find a malfunctioning or failed streetlight or FPU owned outdoor light, report trouble to FPU immediately:

For Amelia Island Customers-

Call us: (904) 261-3663

Visit us: 911 S. 8th St., Fernandina Beach, FL 32034

Send us an e-mail: [neflorida@fpuc.com](mailto:neflorida@fpuc.com).

For Jackson, Liberty & Calhoun County Customers-

Call us: (850) 526-6800 (Jackson County) or (850) 674-4748 (Liberty and Calhoun Counties)

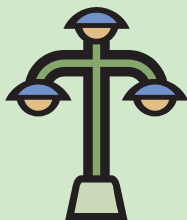
Visit us: 2825 Pennsylvania Ave., Marianna, FL 32447

Send us an e-mail: [nwflorida@fpuc.com](mailto:nwflorida@fpuc.com).

Go the Extra M-I-L-E and tell us

MALFUNCTION or problem with the streetlight; INFORMATION including your name, address, telephone number and e-mail address; LOCATION of the streetlight.

Thank you for making the EFFORT!



## Call Before You Dig



Underground utility lines are virtually everywhere— even your backyard. If you're installing a mailbox, fence, pool, landscaping or anything else that requires digging, call Sunshine State One

Call at 1-800-432-4770 or dial 8-1-1 more than two full business days before starting the project. If there are buried utility lines in the path of your activity, their location will be marked at no expense to you.

## Power Lines

Treat any downed wire as if it is energized; stay away and don't touch. You can't tell by looking if a downed wire is energized or not.

Telephone or cable television wires that are touching a power line could become energized and should also be avoided. Notify FPU or call 911 to report the location of any downed lines.

## Cash Rebates

You can receive CASH REBATES for upgrading your ceiling insulation or heating and cooling system.

Visit [www.fpuc.com](http://www.fpuc.com) to learn more about our CASH REBATES or call your local FPU office and speak with an Energy Conservation Representative today!



## FPU's Offices will be Closed in Observance of the Following Holidays:

Christmas Eve 2007, December 24th

Christmas Day 2007, December 25th

New Year's Day 2008, January 1st

Memorial Day 2008, May 26th

Independence Day 2008, July 4th

Labor Day 2008, September 1st

Thanksgiving Day 2008, November 27th

Day After Thanksgiving 2008, November 28th

Christmas Eve Day 2008, December 25th

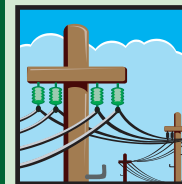
Christmas Day 2008, December 26th

Amelia Island Customers (904) 261-366 Jackson County Customers (850) 526-6800 Liberty and Calhoun County Customers (850) 674-4748

If additional electric safety information is needed please contact FPU's Corporate Safety Dept. at (561) 832-0872 or visit [www.fpuc.com](http://www.fpuc.com)

# ENERGY FOR LIFE SAFETY NEWS FPU Electric Customers

## Electric Safety Tips



In high-risk areas, standard outlets should be placed with Ground Fault Circuit Interrupters (GFCIs). GFCIs are devices that will provide shock protection by quickly cutting off the circuit and preventing injury. GFCIs should be UL approved and installed by a licensed electrician (this is part of the Electric Code).

Whether you're working or playing outdoors, always look up to ensure you avoid electrical wires. Always keep ladders, antennas, poles, boat masts, etc. at least 10 feet from the lines. Also be careful when pruning or climbing trees to avoid the wires. Call FPU for assistance before working closer than 10 feet from any electrical wire.

Water and electricity don't mix! Never use electric appliances near water.

Never fly kites or model airplanes near power lines.

Never climb or cut down trees near power lines.

Isolation is a good thing: Electrical substations, utility poles, pad mounted transformers and electrical meters are designed to safely isolate electricity from people.

Never enter electrical substations, climb utility poles, open/tamper with pad mounted transformers or remove electrical meters.

If you discover a downed wire or line, assume it is an electric wire and stay as far away as possible. Call FPU immediately and do not attempt to move the wire or line. While waiting for FPU to arrive, take care to keep everyone, especially children and pets, as far away as possible from the wire or line.

Never overload or put things in electrical outlets. Plastic outlet guards are a good idea.



[www.fpuc.com](http://www.fpuc.com)

Energy for Life

## Help prevent dog attacks on Meter Readers & Technicians



FPU employees are in neighborhoods like yours day in and day out. Obtaining a meter reading is essential for sending you an accurate bill. However, sometimes obtaining a reading can be difficult— and often dangerous, as was the

case when FPU meter readers were bitten by dogs and seriously injured.

While dogs may be man's best friend and most are very gentle amongst family and friends, most also have a natural instinct to protect their master's home against a perceived intruder. We respect your property and your pets, but also need your help in providing our meter readers safe access to your meter.

### What We Do To Prevent Dog Bites

Because so many of our customers have dogs, we train our employees in dog-bite prevention. In addition to following certain rules and procedures to keep them safe, FPU employees carry dog bite prevention tools: stick with a tennis ball on the end, or an umbrella that provides a barrier between the dog and the meter reader so the meter reader has time to escape. Meter readers also carry a dog repellent spray for use as a last resort in self-defense when they fear a dog bite is imminent.

### On Meter Reading Day Your Help Is Needed:

- Secure your dog on meter reading day.
- Please DO NOT secure your dog to the meter, or in the area of the meter.
- Call your local FPU office to find out when your next read date will be.

Providing a safe environment for FPU employees to do their job will help protect them from serious injuries and the associated liability to dog owners if one of our employees is unexpectedly attacked.

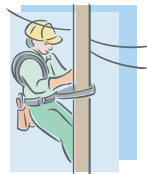
Contact Us When You Get A New Dog

Continued on next page...

## Help prevent dog attacks on Meter Readers & Technicians

Continuation...

If you don't have a dog now, but are planning to, please contact us once you do. We will note your account, making our employees aware of your new pet. Please help us keep our FPU employees safe so they can continue to provide you with the most accurate meter reading and exceptional technical service. For more information call your local FPU office today.



## Use Safety Near FPU Employees

Stay away from areas where FPU crews are working. Whether you're driving or walking, pay attention to all warning signs, drive cautiously and let the crews work to restore power quickly and safely.

## Did You Know?

Clean or replace the return air filters in your heating and cooling system regularly. Clogged filters greatly reduce comfort and increase your energy bill. Filters should be checked once a month.



Check all electrical cords for visible damage. Cracked or frayed cords can be dangerous. To avoid excessive wear and cord damage, ensure that cords do not run under rugs or have furniture resting on them. Make sure electric cords are not nailed or stapled in place. Cord damage can result in fire and shock hazard.

## FPU's Medical Alert Program



Florida Public Utilities' Medical Alert Program is offered to customers whose electrical service is medically essential. Customers requiring life-sustaining equipment (such as heart monitors, oxygen concentrators, controlled medications, controlled atmosphere, etc.) can rely on Florida Public Utilities to provide special consideration for their accounts.

If you or a member of your family uses life-sustaining equipment, please call your local FPU office. A customer service representative will give you details about the Medical Alert Program and tell you how to qualify.

If you are already on the Medical Alert Program, please contact us to renew your certification. Annual certification is required.

## Important Notice for the Disabled



If you or a member of your family is disabled and may need assistance during evacuation, you must call your Emergency Management Agency (EMA) office at one of the following numbers:

- Calhoun County EMA (850) 674-8075
- Jackson County EMA (850) 482-9678
- Liberty County EMA (850) 643-2339
- Nassau County EMA (904) 491-7550

## Tree Safety



Trimming trees near electric lines is dangerous and can have deadly consequences. Contact a qualified professional trimmer to prune the trees near electric lines. The best way to prevent tree limbs from growing into your electric service is to avoid planting tall trees nearby.